

AAHKS Team Member Course 2016

THA COMPLICATIONS

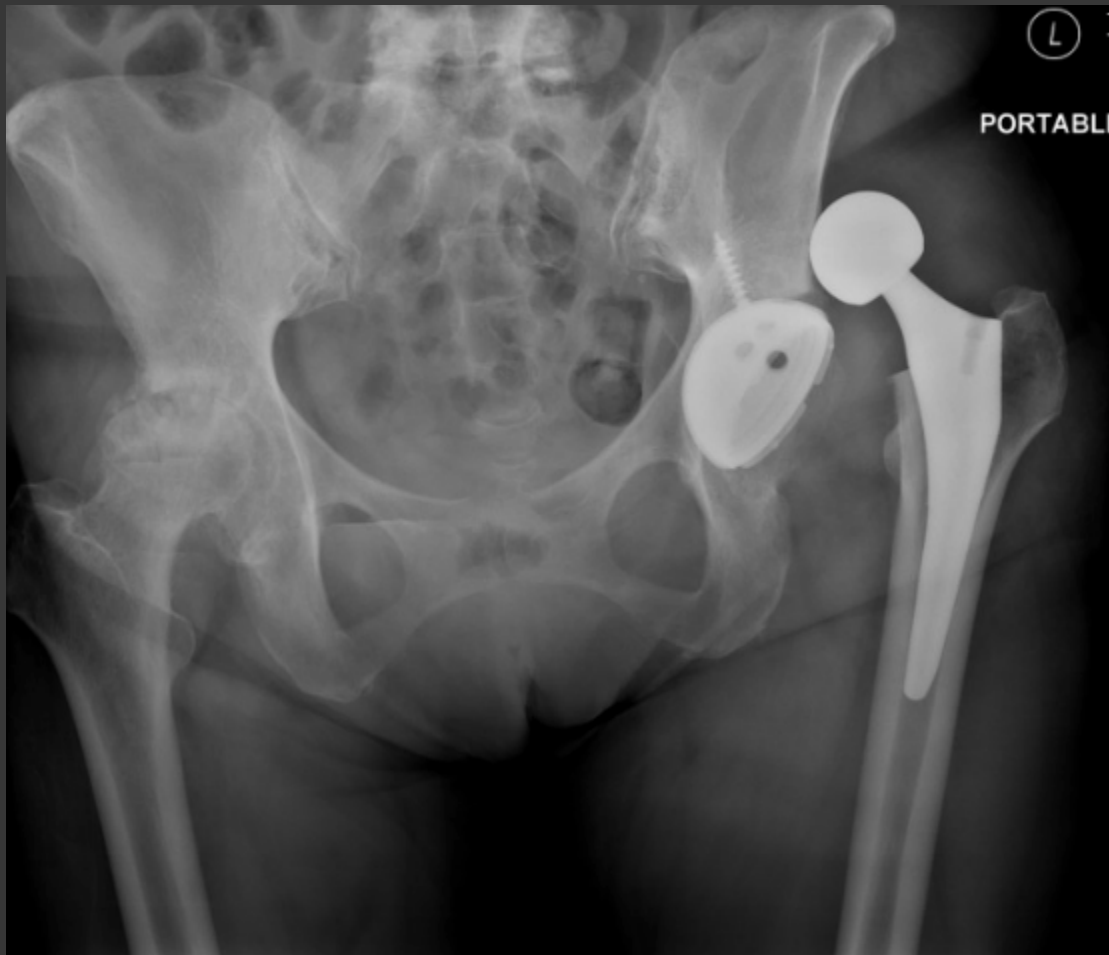
Burning Questions?

- Perioperative management
- Wound closure / management
- Pain protocols
- Early Discharge / Outpatient
- Preoperative screening
- Surgical Techniques

53 yo female, bilateral hip pain



In the PACU



Are Postop Xrays Necessary?

- “Routine Recovery Room Radiographs for THA”
Mulhall et al. *J Arthroplasty* 2014
- 2065 consecutive THA xrays in recovery room
- **Dislocation found in 6 case (0.29%)**
 - **Confirmed by Ndu et al. *J Arthroplasty* 2012 (0.3%)**
- 4 patients reduced closed with regional anesthesia in recovery room
- 2 patients return to OR for general anesthesia and reduced closed

Fracture in the PACU



38 yo male, minimal hip pain



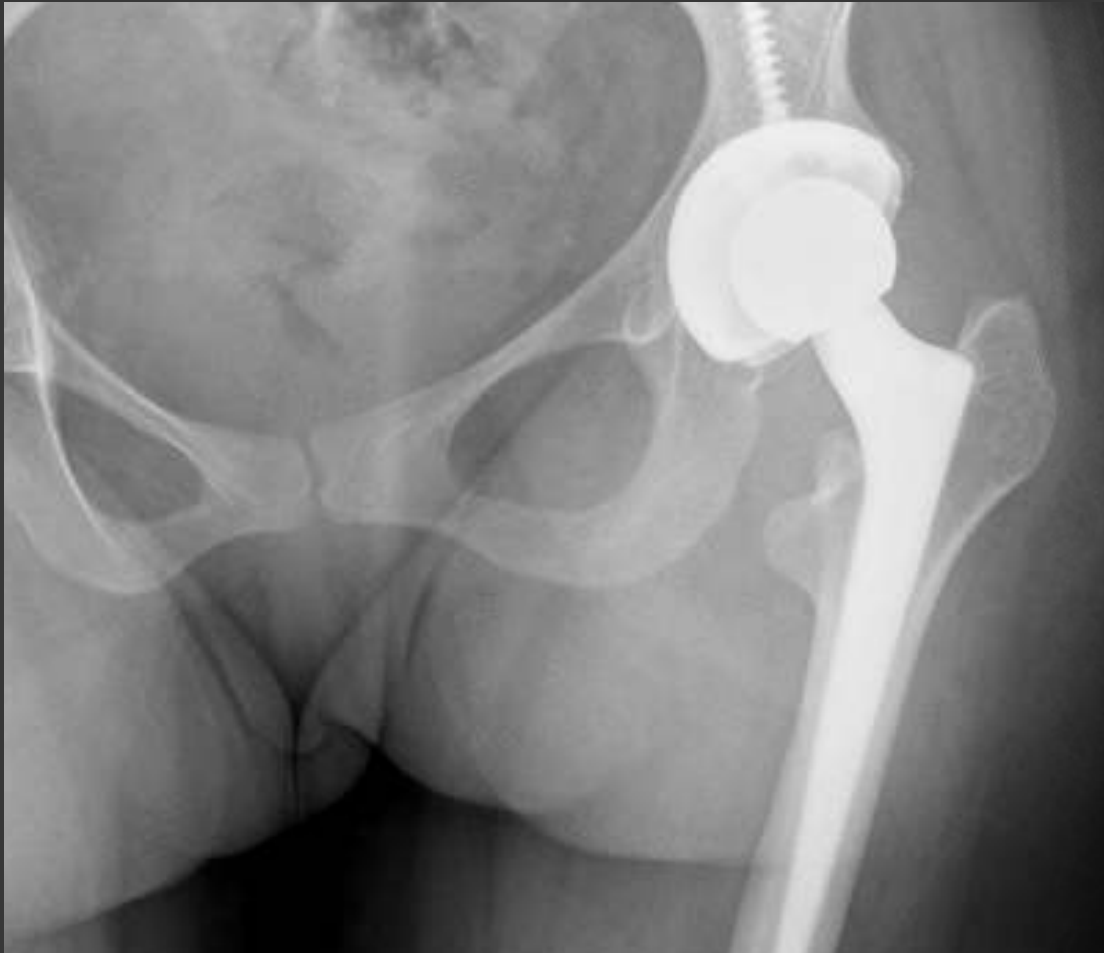
4 week follow up



21 yo female with JRA



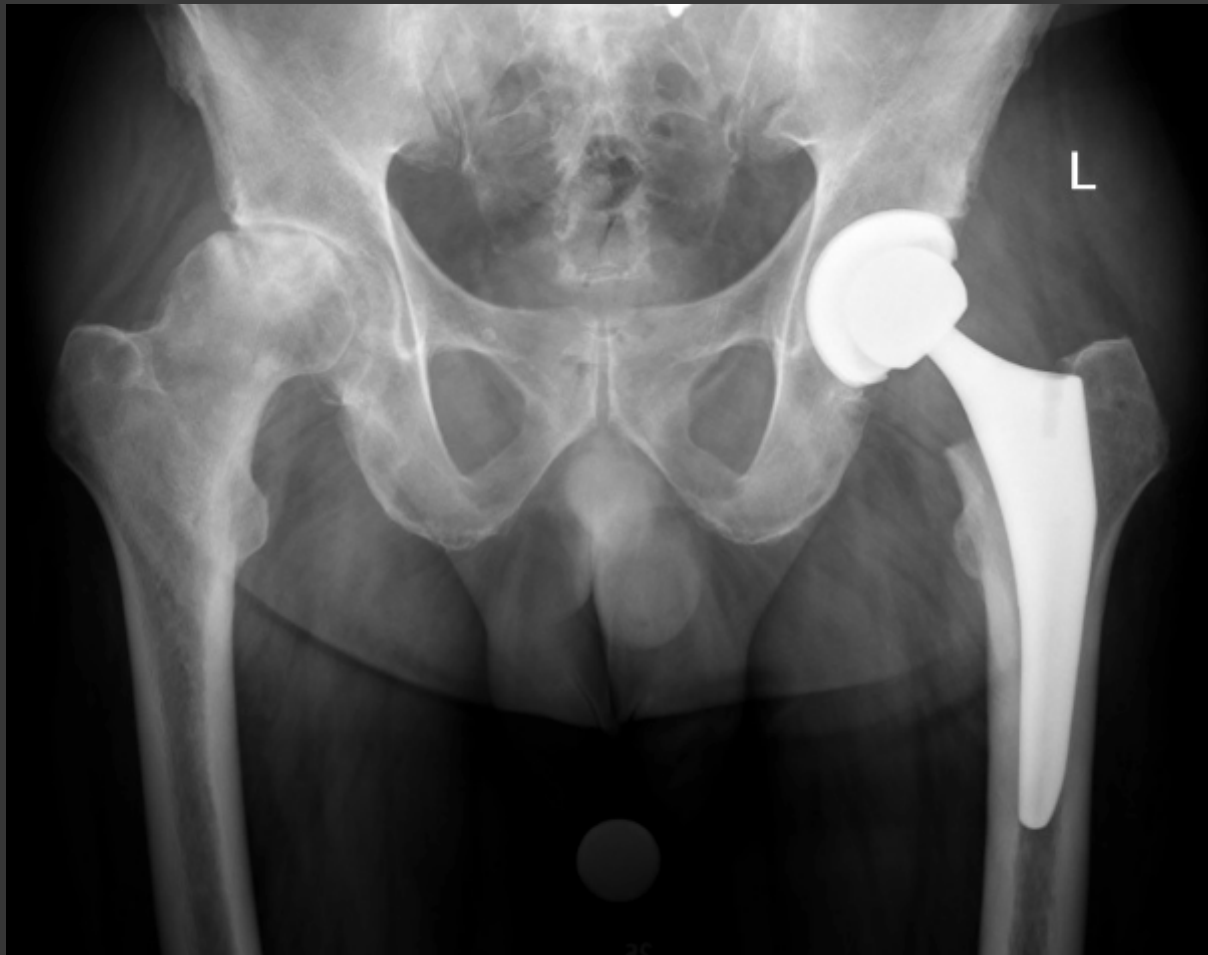
Postop Peroneal Nerve Injury



55 yo male, psoriatic arthritis



4 weeks postop



6 weeks postop

- 3 days of fevers/chills and increasing left hip pain
- Acute onset wound redness / drainage
- Workup?
- Treatment Options?

Workup Lab Values

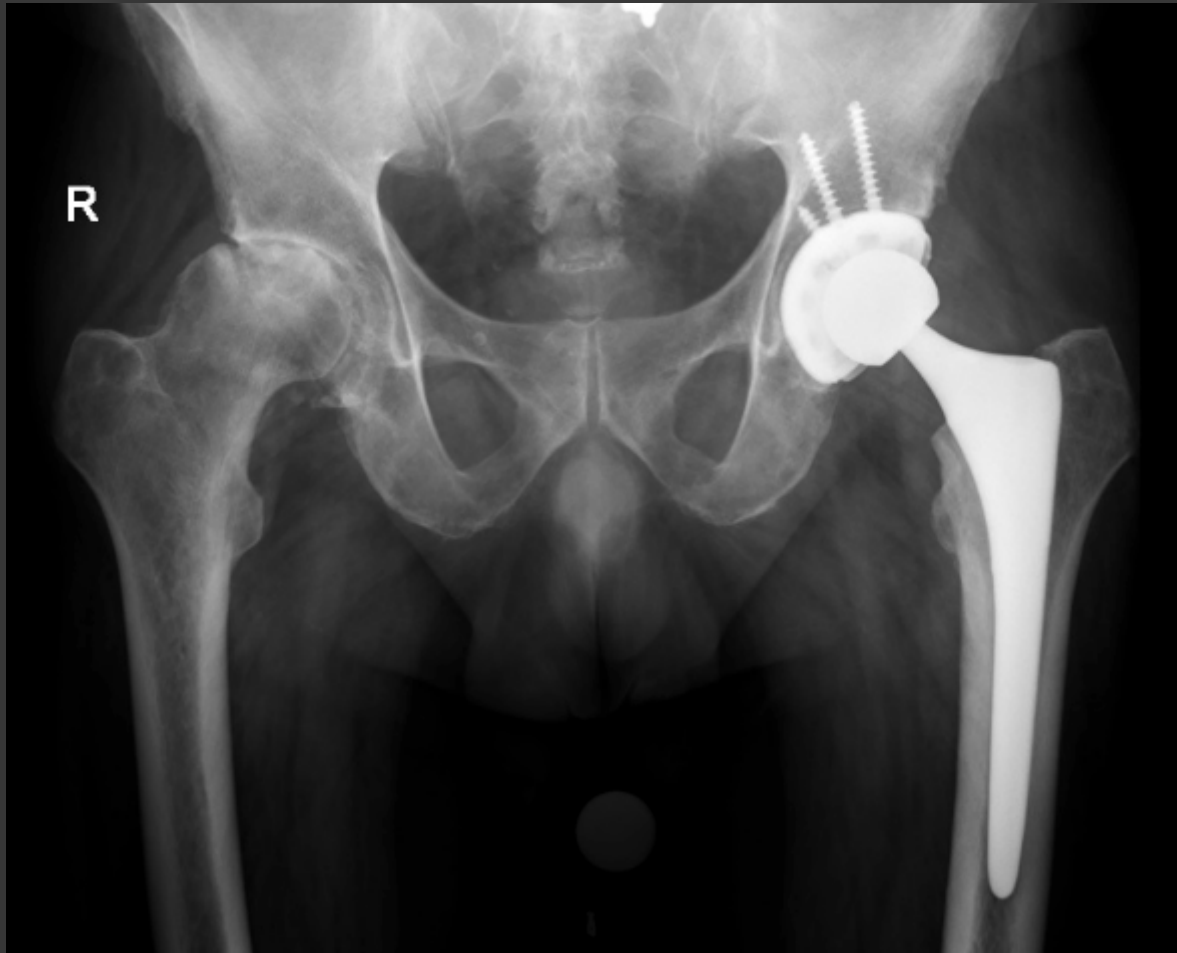
- ESR 120
- CRP 65
- Hip aspiration 400,000 WBCs

- Treatment Plan?

Resection THA



Reimplantation

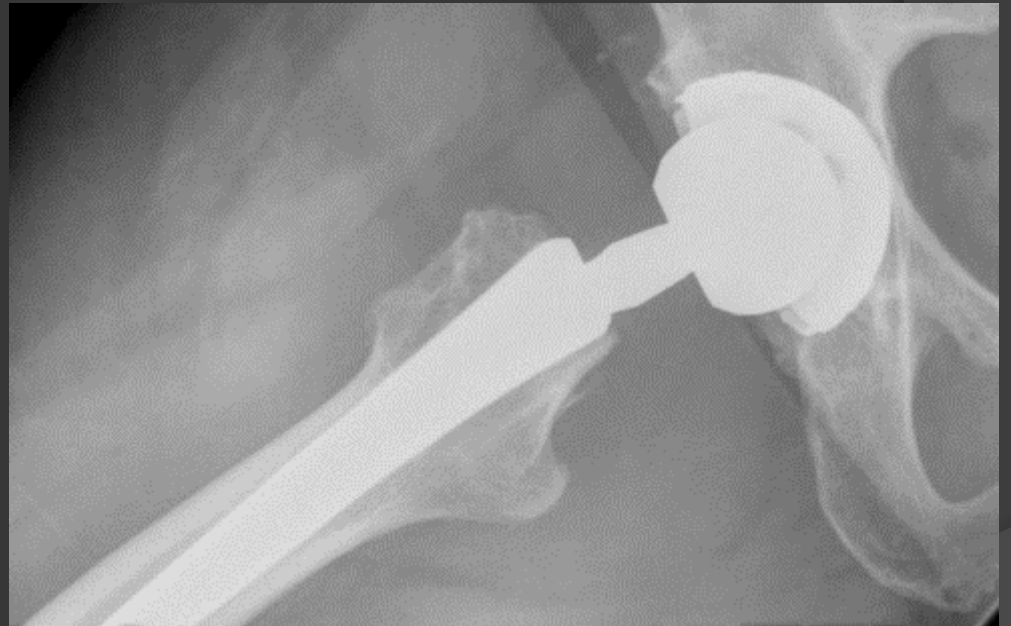
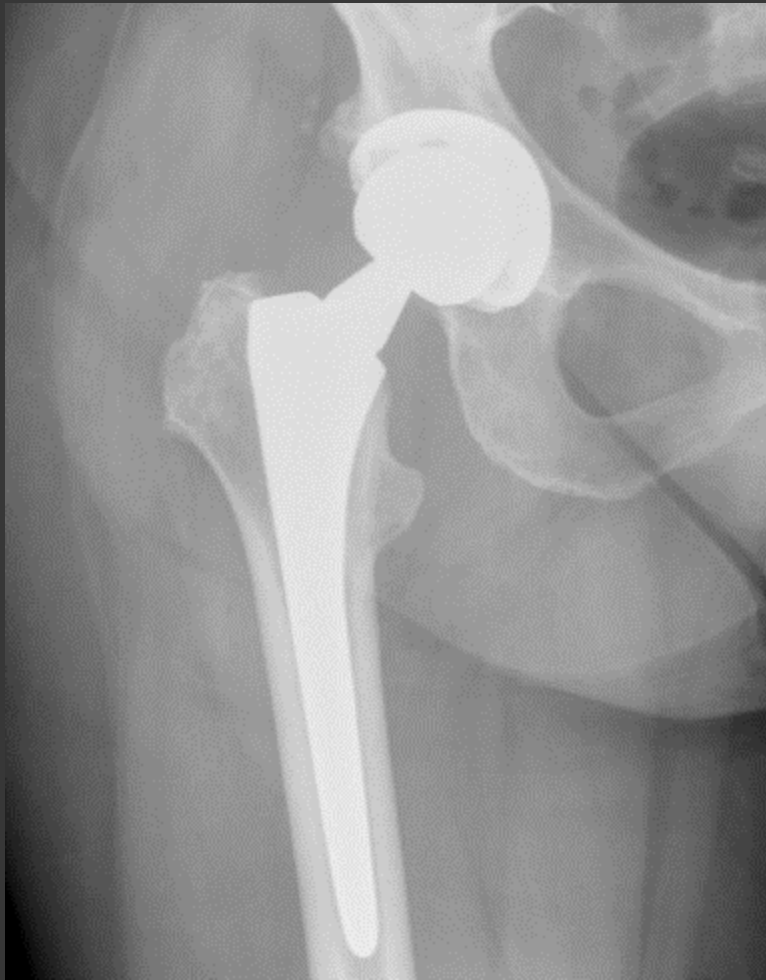


Case

- ⦿ 67 yo female
- ⦿ Right THA in 2007 with persistent pain since surgery
- ⦿ Revision THA / open biopsy in 2009
 - Modular neck exchange
 - Metal-polyethylene bearing exchange
 - Biopsy negative for infection
 - Necrosis and lymphocyte predominance

Case

- ⦿ Persistent pain in right groin
- ⦿ Physical exam consistent with intrinsic mechanical hip pain
- ⦿ Negative ESR and CRP
- ⦿ Hip aspiration negative for infection

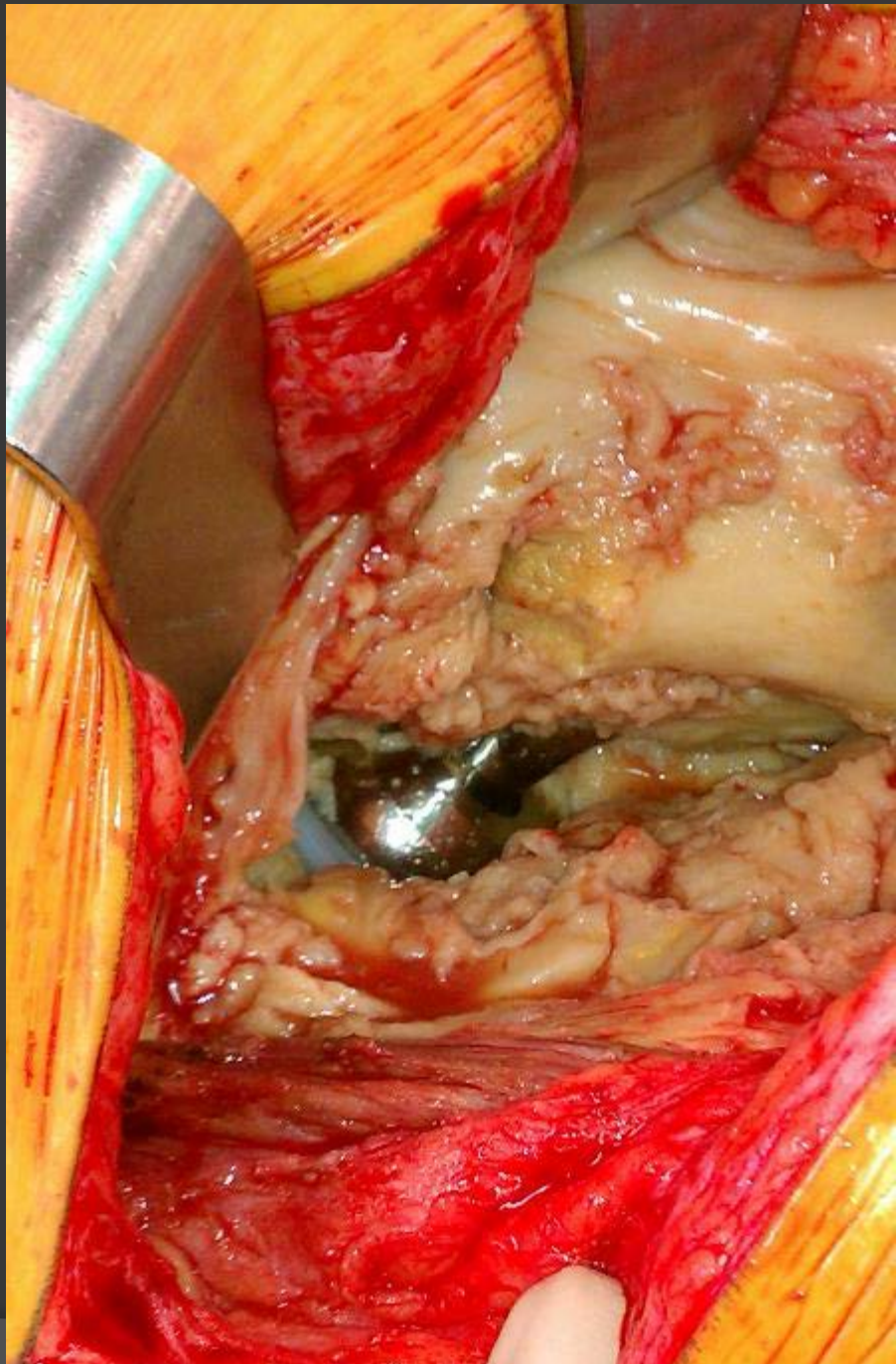


Serum Metal Ion Studies

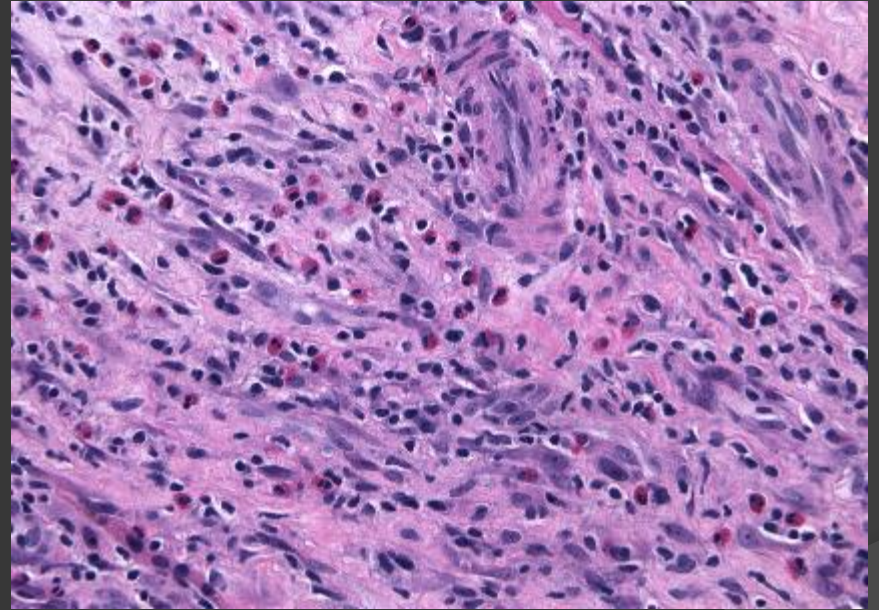
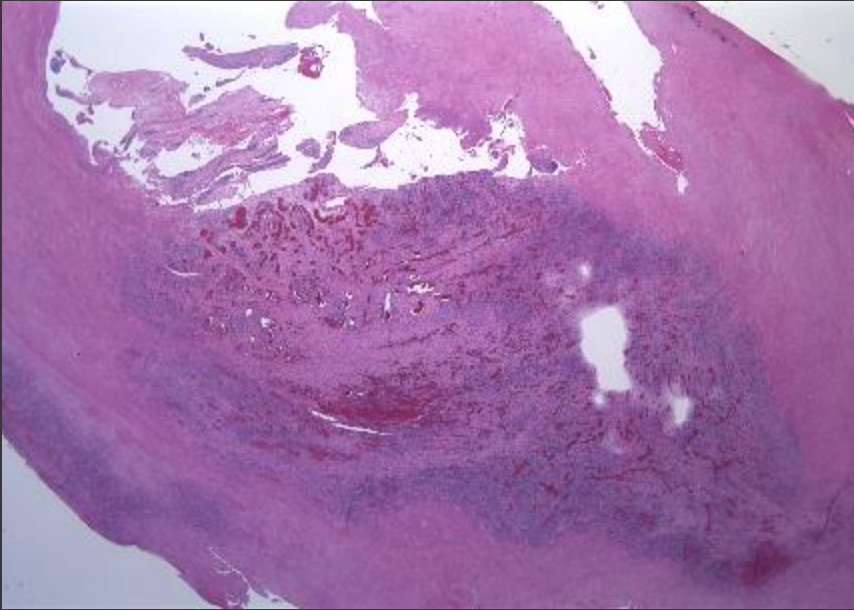
- Co: 5.6
- Chromium: 0.83
- Ti: 4.87

MARS MRI

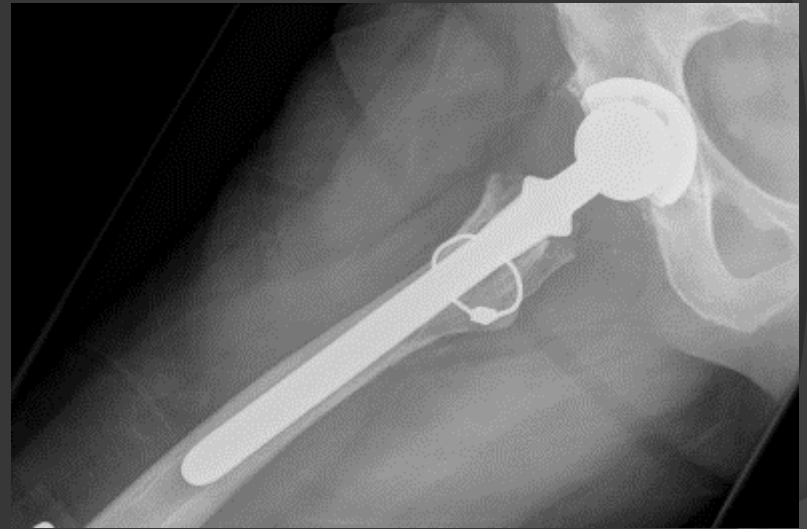
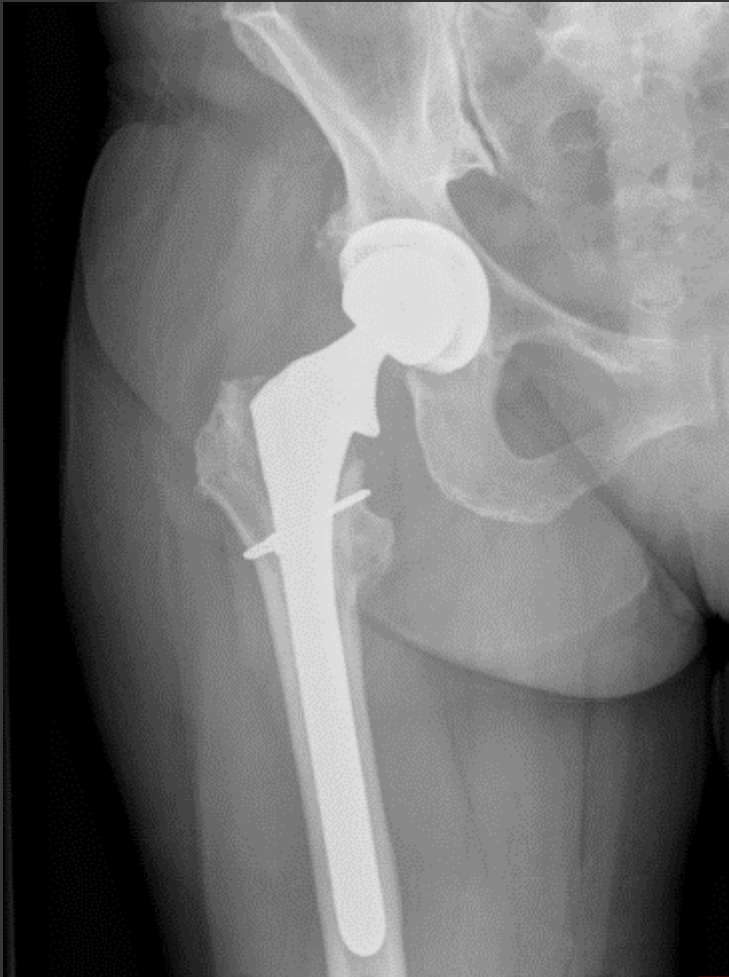
- ⦿ Large fluid collection communicating with hip joint
- ⦿ Abductors appeared intact



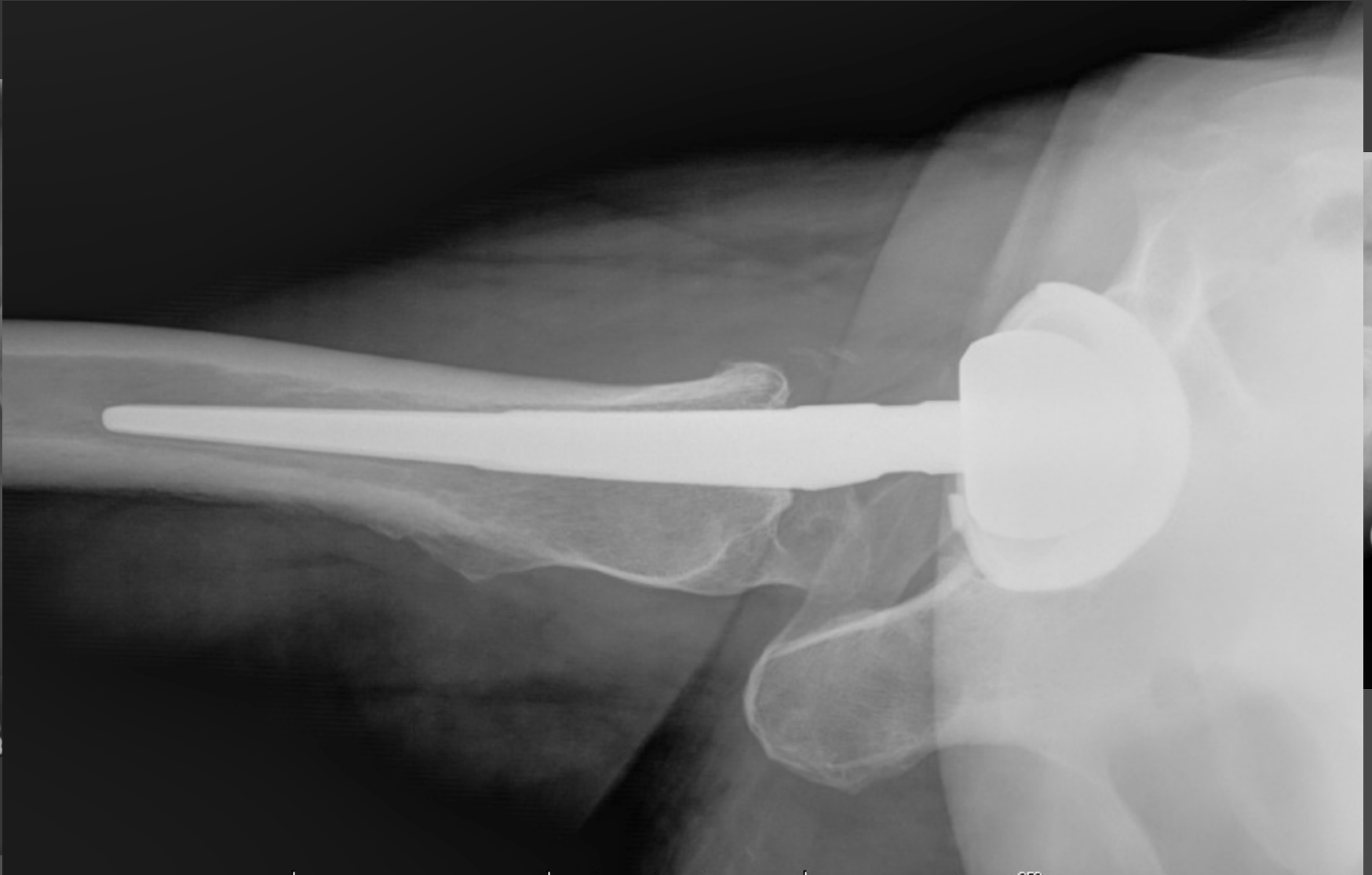
ALTR Pathology

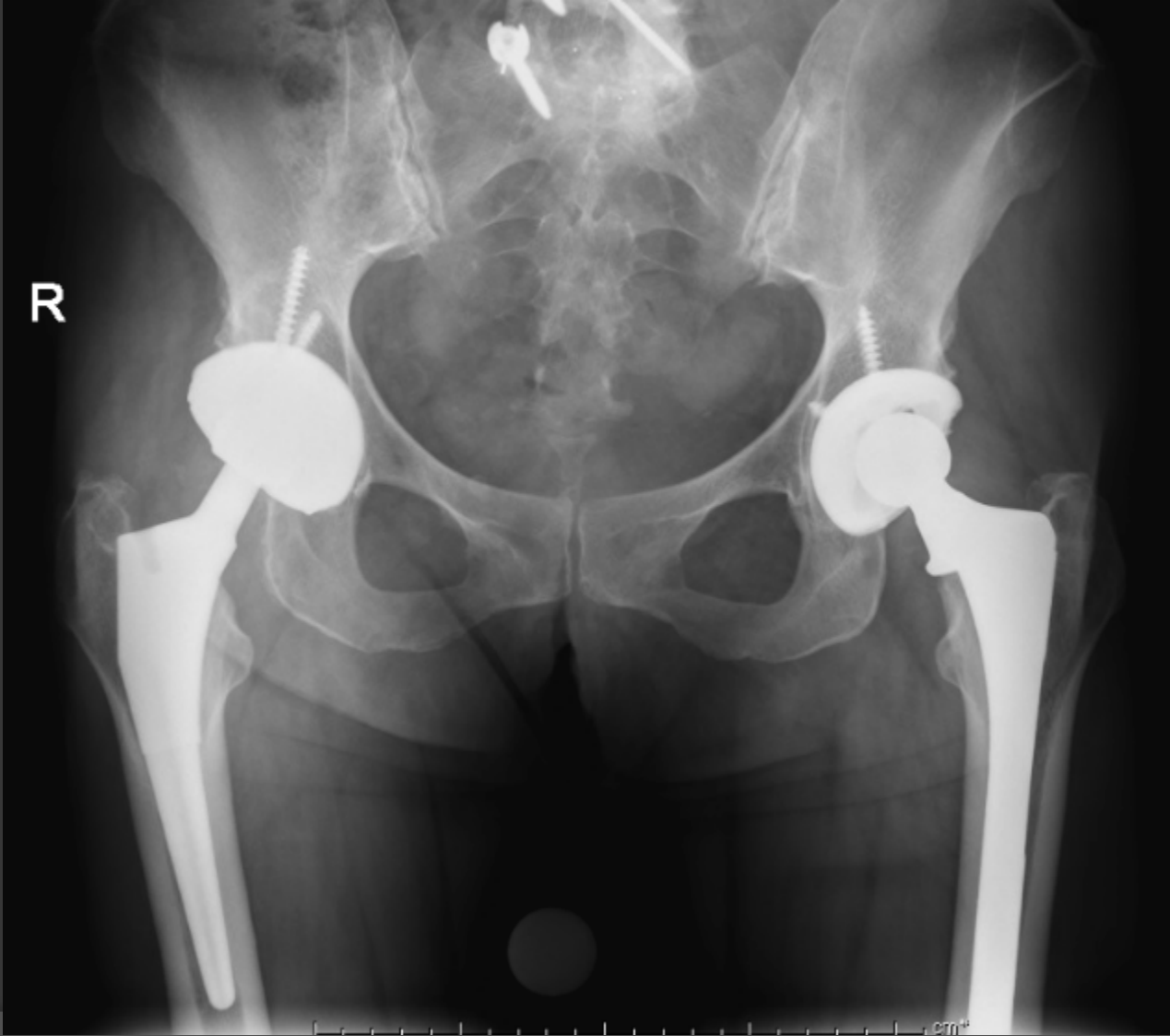


8 months postop



50 yo active female



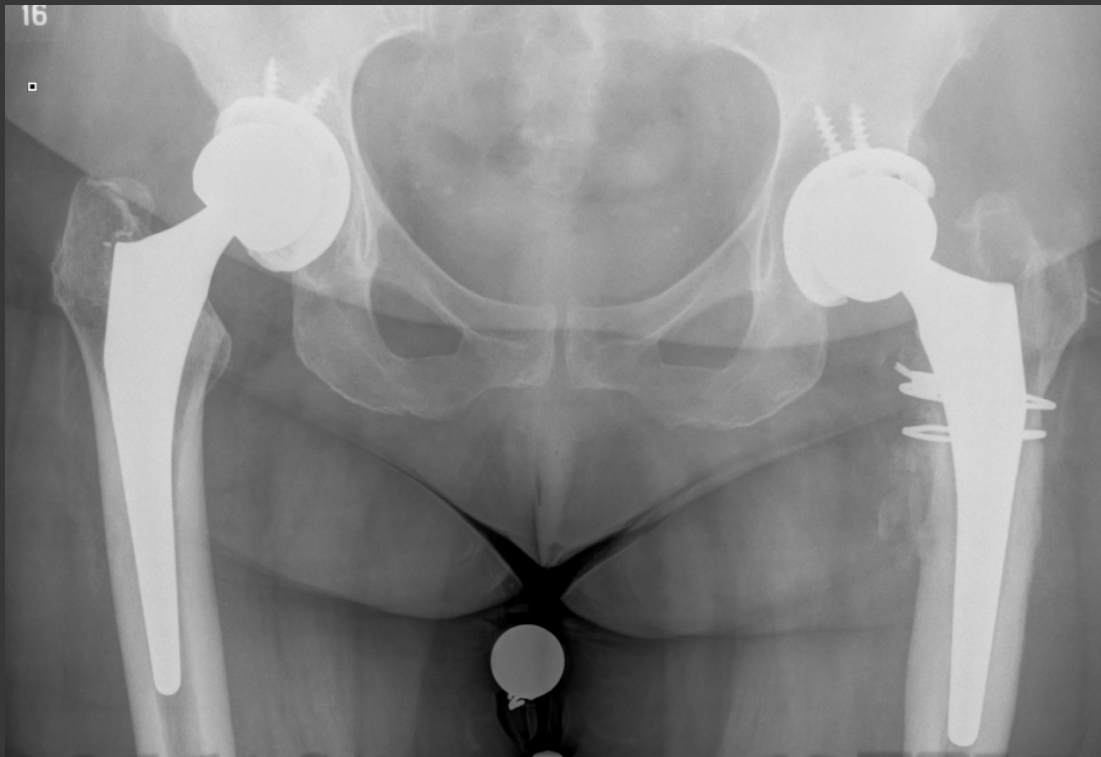


Dual Mobility Assembly



62 yo female, bilat THA via DA
approach 1 yr ago, severe L hip pain

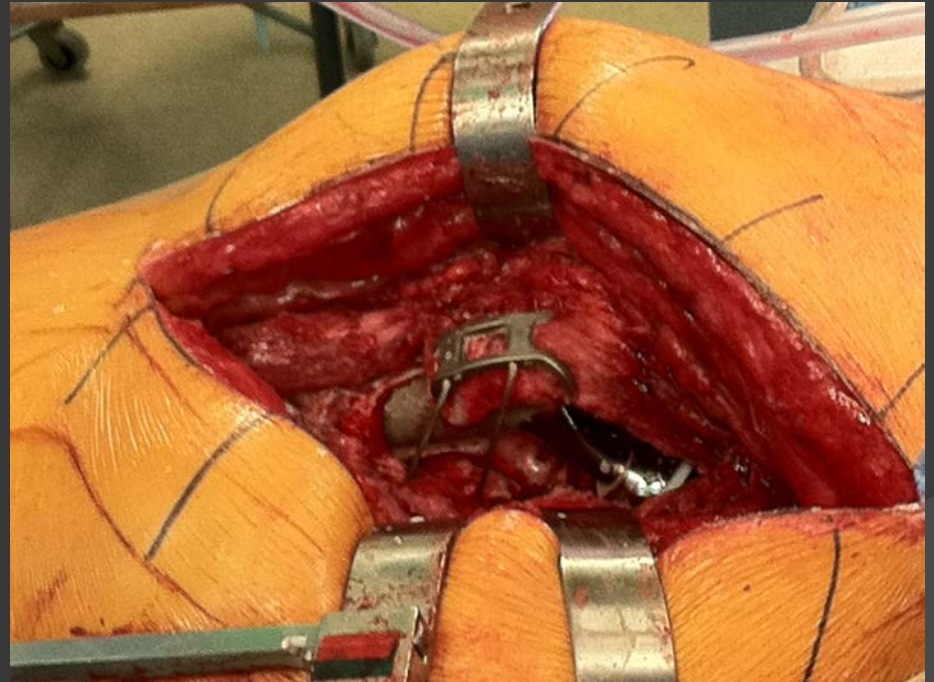
Reoperation hrs after THA - intraop fx



Pseudomonas infection +



Reimplantation THA, Rev Cup, Rest Modular, Cone-Conical



Thank You